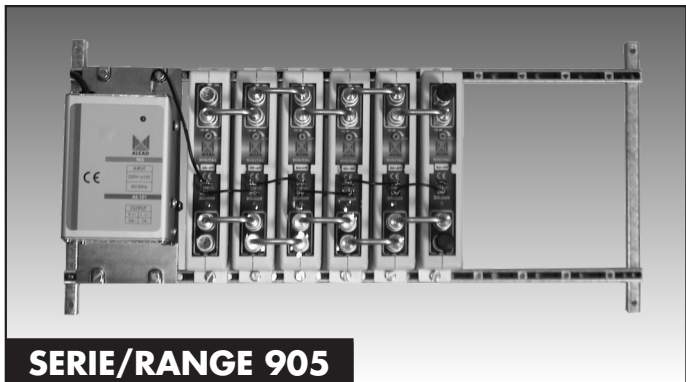




- ▶ AMPLIFICADOR MULTICANAL
- ▶ MULTICHANNEL AMPLIFIER
- ▶ AMPLIFICATEUR MULTICANAL
- ▶ AMPLIFICADOR MULTICANAL
- ▶ MEHRKANAL VERSTÄKER



CARACTERISTICAS PRINCIPALES**MAIN FEATURES****PRINCIPALES CARACTERISTIQUES****CARACTERISTICAS PRINCIPALES****WESENTLICHE KENNZEICHEN**

CODIGO-CODE-CODE-CODIGO-CODE	90548	90549	90550
TIPO-TYPE-TYPE-TIPO-TYP	ZG-402	ZG-403	ZG-404
SISTEMA DE TV TV SYSTEM SYSTEME DE TV SISTEMA DE TV TV SYSTEM	COFDM AM TV		
NUMERO DE CANALES NUMBER OF CHANNELS NOMBRE DE CANAUX NUMERO DE CANAIS ANZAHL KANALE	2	3	4
RANGO DE FRECUENCIAS FREQUENCY RANGE GAMME DE FREQUENCE RANGO DE FRECUENCIAS FREQUENZBEREICH	Band	UHF	
	MHz	470 - 862	
GANANCIA GAIN GAIN GANHO VERSTÄRKUNG	dB	53 ± 3	
REGULACIÓN DE GANANCIA GAIN ADJUST REGLAGE DE GAIN REGULAÇÃO DO GANHO VERSTÄRKUNGSGRAD-REGELUNG	dB	20	
REDUCCION DE GANANCIA CON DESMEZCLA GAIN LOSS WITH SPLITTING REDUCTION DU GAIN AVEC DECOUPLAGE REDUCCION DE GANANCIA CON DESMEZCLA ABZWEIGUNG VERSTÄRKUNGSVERLUST	dB	3,5	
NIVEL MAXIMO DE SALIDA MAXIMUM OUTPUT LEVEL NIVEAU MAXIMAL DE SORTIE NIVEL MAXIMO DE SALIDA MAXIMALE AUSGANGSSPANNUNG	dB μ V	123,5 DIN 45004K	
NIVEL MAXIMO DE SALIDA MAXIMUM OUTPUT LEVEL NIVEAU MAXIMAL DE SORTIE NIVEL MAXIMO DE SALIDA MAXIMALE AUSGANGSSPANNUNG	dB μ V	118 (IMD ₃ -35 dB)	
NIVEL MAXIMO DE SALIDA MAXIMUM OUTPUT LEVEL NIVEAU MAXIMAL DE SORTIE NIVEL MAXIMO DE SALIDA MAXIMALE AUSGANGSSPANNUNG	dB μ V	CONSULTAR TABLA CHECK TABLE VOIR TABLEAU CONSULTAR TABLA TABELLE ANSEHEN	
PERDIDAS DE RETORNO RETURN LOSS PERTES DE RETOUR PERDAS DE RETORNO RUCKFLUßDÄMPFUNG	dB	≥ 10	

CARACTERISTICAS PRINCIPALES

MAIN FEATURES

PRINCIPALES CARACTERISTIQUES

CARACTERISTICAS PRINCIPAIS

WESENTLICHE KENNZEICHEN

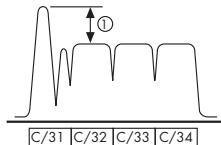
CODIGO-CODE-CODE-CODIGO-CODE		90548	90549	90550
TIPO-TYPE-TYPE-TIPO-TYP		ZG-402	ZG-403	ZG-404
FIGURA DE RUIDO NOISE FIGURE FACTEUR DE BRUIT FIGURA DE RUIDO RAUSCHMAß	dB	≤ 6		
SELECTIVIDAD SELECTIVITY SELECTIVITE SELECTIVIDADE SELEKTIVITÄT	dB	25 ±16 MHz 40 ±24 MHz	17 ±16 MHz 30 ±24 MHz	15 ±16 MHz 28 ±24 MHz
ALIMENTACION POWER SUPPLY ALIMENTATION ALIMENTAÇÃO NETZEIL	V _{DC}	24		
	mA	75		
TEMPERATURA DE FUNCIONAMIENTO OPERATING TEMPERATURE TEMPERATURE DE FONCTIONNEMENT TEMPERATURA DE FUNCIONAMENTO BETRIEBSTEMPERATUR	°C	-5 ... +50		
INDICE DE PROTECCION PROTECTION INDEX INDICE DE PROTECTION INDICE DE PROTECÇÃO SCHUTZKLASSE		IP 20		

DIN 45004K: 3 unequal carriers, IMD₃ at 54 dB

IMD₃ -35 dB: 2 equal carriers, EN 50083-5

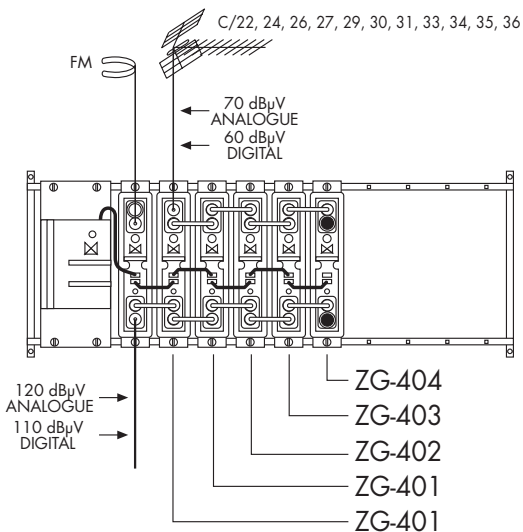
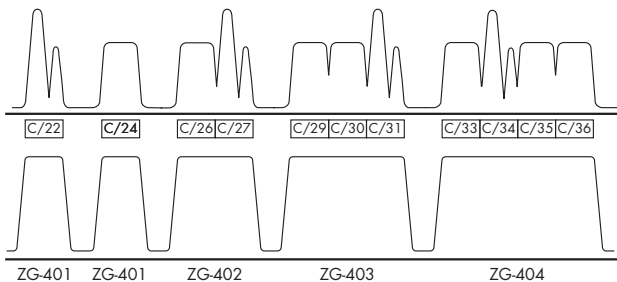
ZG-402/403/404

DIFERENCIA DIFFERENCE DIFFERENCE DIFFERENCIA UNTERSCHIED	ANALOGICO AM TV ANALOGUE AM TV ANALOGIQUE AM TV ANALOGICO AM TV ANALOGUE AM TV	DIGITAL COFDM DIGITAL COFDM NUMERIQUE COFDM DIGITAL COFDM DIGITAL COFDM
①		
dB	dB _μ V	dB _μ V
0	117,0	117,0
3	120,0	117,0
5	122,0	117,0
7	123,5	116,5
10	123,5	113,5
15	123,5	108,5
20	123,5	103,5



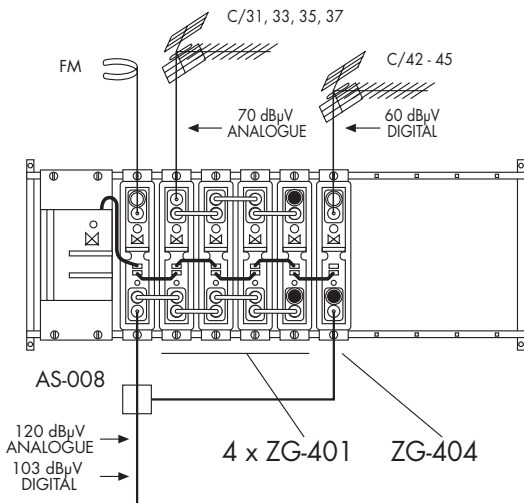
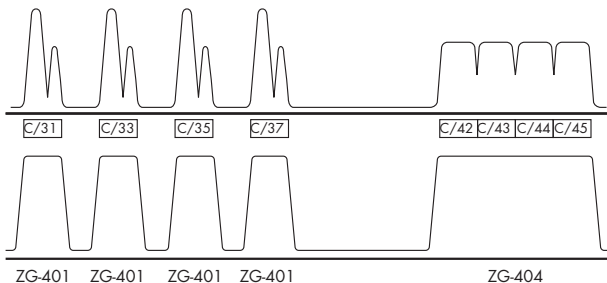
- ▶ ESQUEMAS TÍPICOS
- ▶ CONNECTION DIAGRAMS
- ▶ SCHEMAS DE CONNEXION
- ▶ ESQUEMAS TÍPICOS
- ▶ VERDRAHTUNGSPLAN

	ANALOGUE AM TV
	DIGITAL COFDM



- ▶ ESQUEMAS TÍPICOS
- ▶ CONNECTION DIAGRAMS
- ▶ SCHEMAS DE CONNEXION
- ▶ ESQUEMAS TÍPICOS
- ▶ VERDRAHTUNGSPLAN

	ANALOGUE AM TV
	DIGITAL COFDM





DECLARATION OF CONFORMITY

according to EN 45014

Manufacturer's Name: ALCAD, S.A.

Manufacturer's Address: Polígono Industrial de Ventas
C/Gabiria, 15 - Apdo. 455
20305 IRUN (Guipúzcoa)
SPAIN

declares that the product

Product Name: 905 Series: MODULAR MULTICHANNELS AMPLIFIERS

Model Number(s): ZG-402, ZG-403, ZG-404

Product Option(s): INCLUDING ALL OPTIONS

is in conformity with:

Safety: EN50083-1

EMC: EN 50083-2, EN 50081-1 Electromagnetic Compatibility for Equipment
IEC 61000-4-2:1995 / EN 50082-1:1997 ESD 8KV AD, 4KV CD.
IEC 61000-4-4:1995 / EN 50082-1:1997 EFT 0,5KV-5KHz Sig. Lines, 1KV-5KHz Power Lines.
IEC 61000-4-5:1995 / EN 50082-1:1997 CWG 1KV Power Lines.
IEC 61000-4-11:1994 / EN 50082-1:1997 Dips and Variation.

Technical Features : EN50083-4

Supplementary Information:

The product herewith complies with the requirements of the Low Voltage Directive 73/23/ECC, and the EMC Directive 89/336/EEC and their relevant amendments, gathered under the directives 93/68/EEC.

Note: to comply with these directives, do not use the products without covers and operate the system as specified.



Irún,

25-07-00

Date

Anton Galarza / General Manager



ALCAD, S.A.
Tel. 943 63 96 60
Fax 943 63 92 66
Int. Tel. +34 - 943 63 96 60
info@alcad.net
Apdo. 455 - C/GABIRIA, 15
20305 IRUN - Spain
Tel. 21 - 716 10 36
Fax 21 - 716 41 09
R. Dr. JOAQUIM MANSO, 12A
1500 LISBOA - Portugal

Tel. 00 34 - 943 63 96 60
Fax 00 34 - 943 63 92 66
B.P. 284
64702 HENDAYE - France

Tel. 080 38 - 91 73
Fax 080 38 - 91 74
HOLZHAUSEN, 11
83556 GRIESSTATT - Deutschland



ISO 9001

